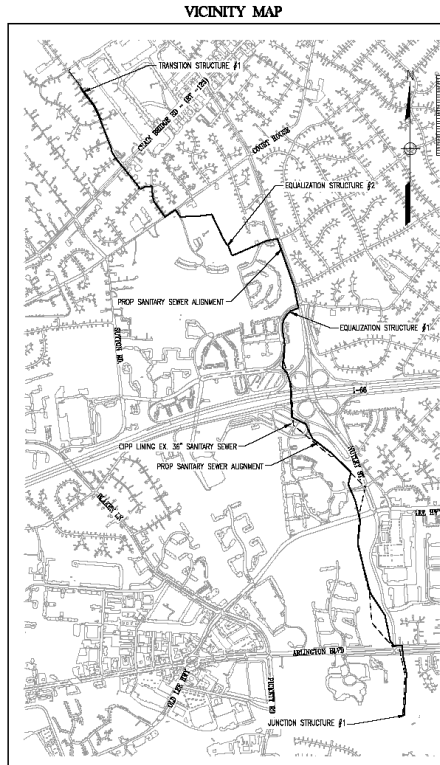


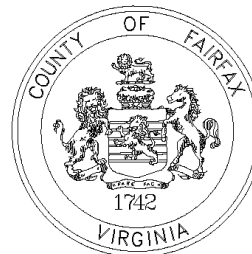
# FAIRFAX COUNTY, VIRGINIA DEPARTMENT OF PUBLIC WORKS AND ENVIRONMENTAL SERVICES

## ACCOTINK GRAVITY SEWER IMPROVEMENTS

PROJECT NO. **WW-000032-007**



LEGEND  
--- CPP LINING  
--- PROPOSED SAN. SEW.

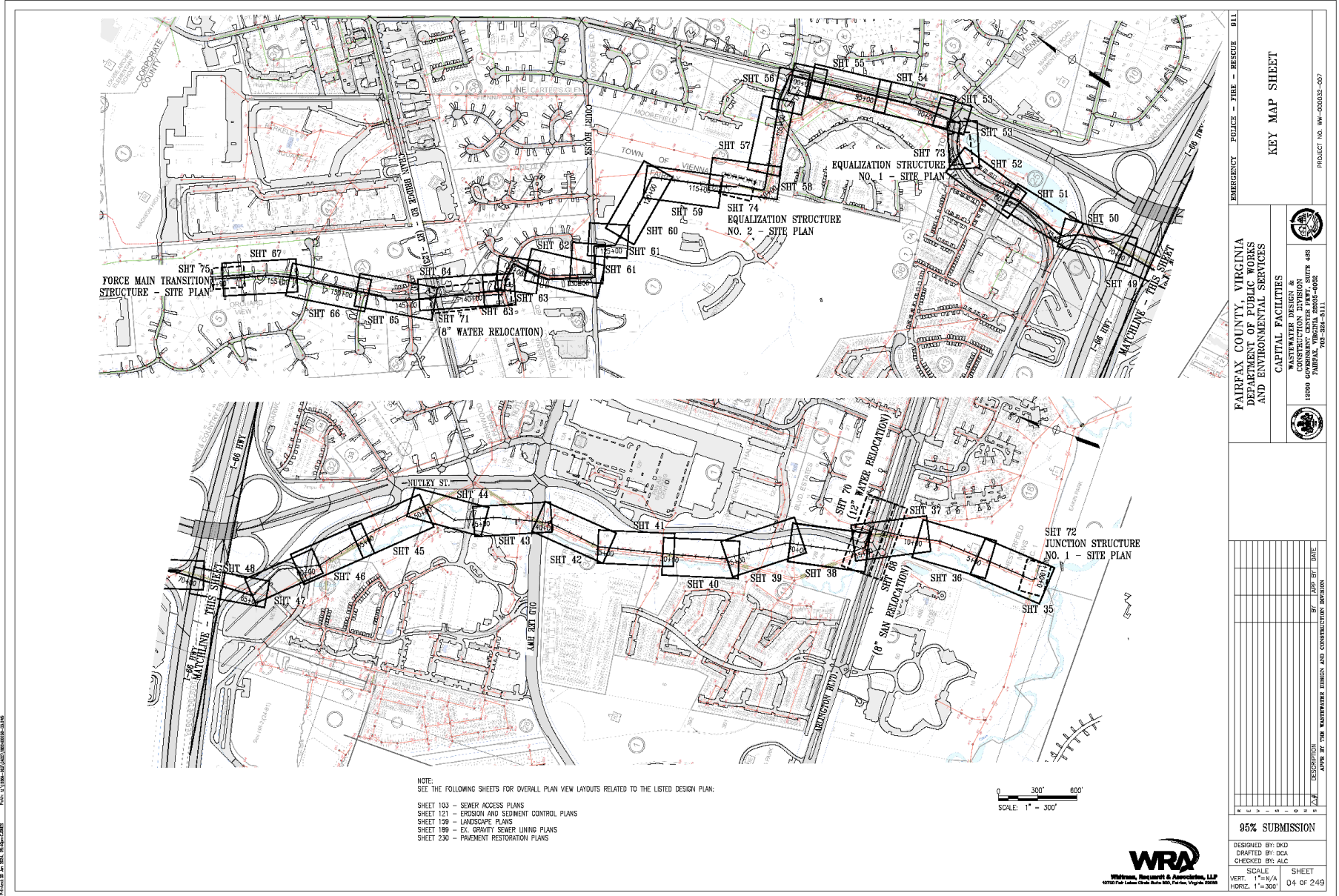


**JANUARY 2024**  
**95% SUBMISSION**



RECOMMENDED FOR APPROVAL FOR CONSTRUCTION	
DIRECTOR, Wastewater Design and Construction Division	DATE
DIRECTOR, Wastewater Collection Division	DATE
APPROVED	
DEPUTY DIRECTOR, Department of Public Works and Environmental Services	DATE

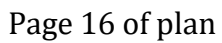
EMERGENCY - POLICE - FIRE - RESCUE 911	
FAIRFAX COUNTY, VIRGINIA DEPARTMENT OF PUBLIC WORKS AND ENVIRONMENTAL SERVICES	
CAPITAL FACILITIES CONSTRUCTION DIVISION 12000 GOVERNMENT CENTER PARK, SUITE 400 FAIRFAX, VA 22031-5111	
PROJECT NO. WW-000032-007	
95% SUBMISSION	
DESIGNED BY: DKO	SHEET
DRAFTED BY: DCA	01 OF 249
CHECKED BY: ALC	
SCALE	
VERT. 1"=100'	
HORIZ. 1"=1000'	

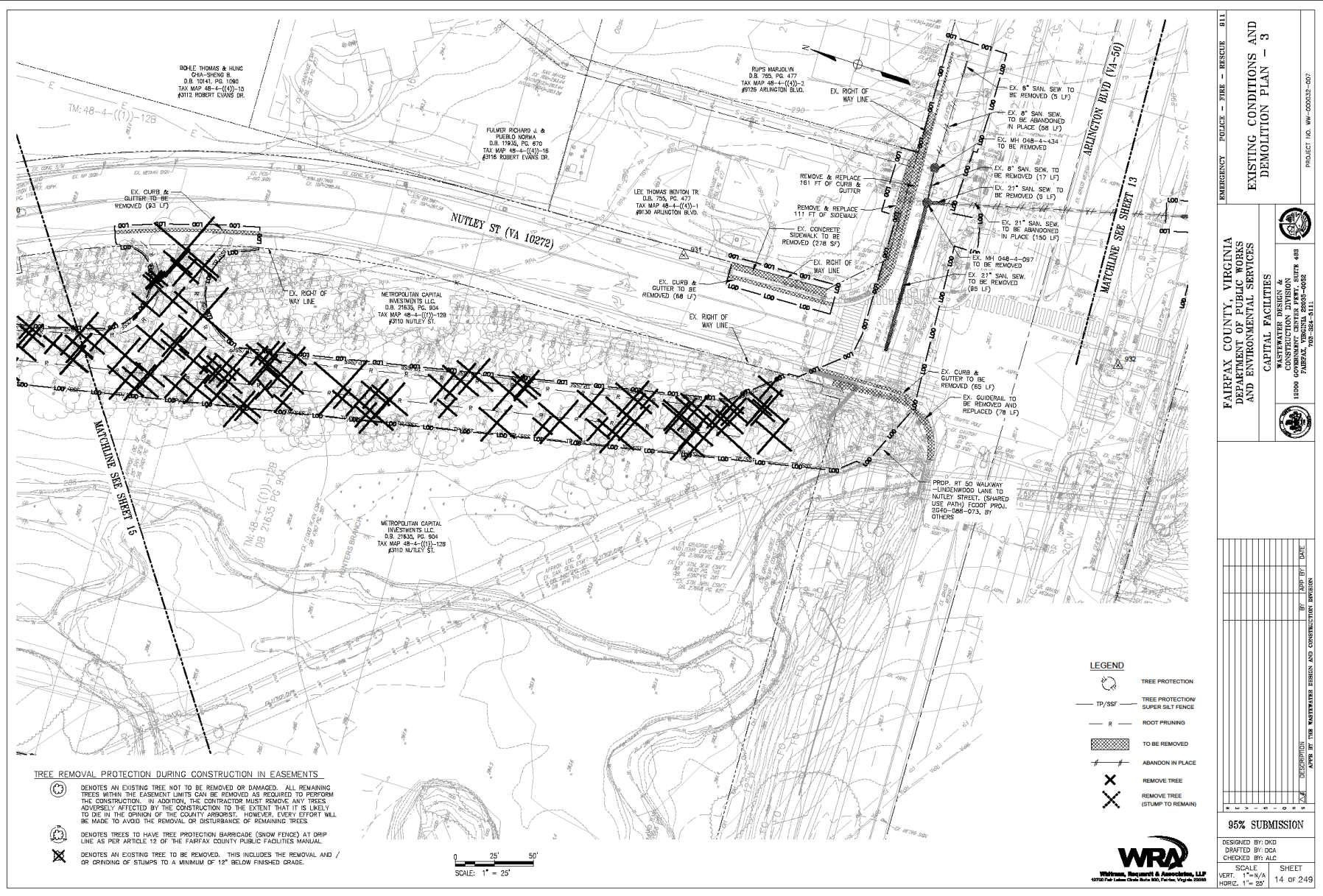


Page 4 of plan

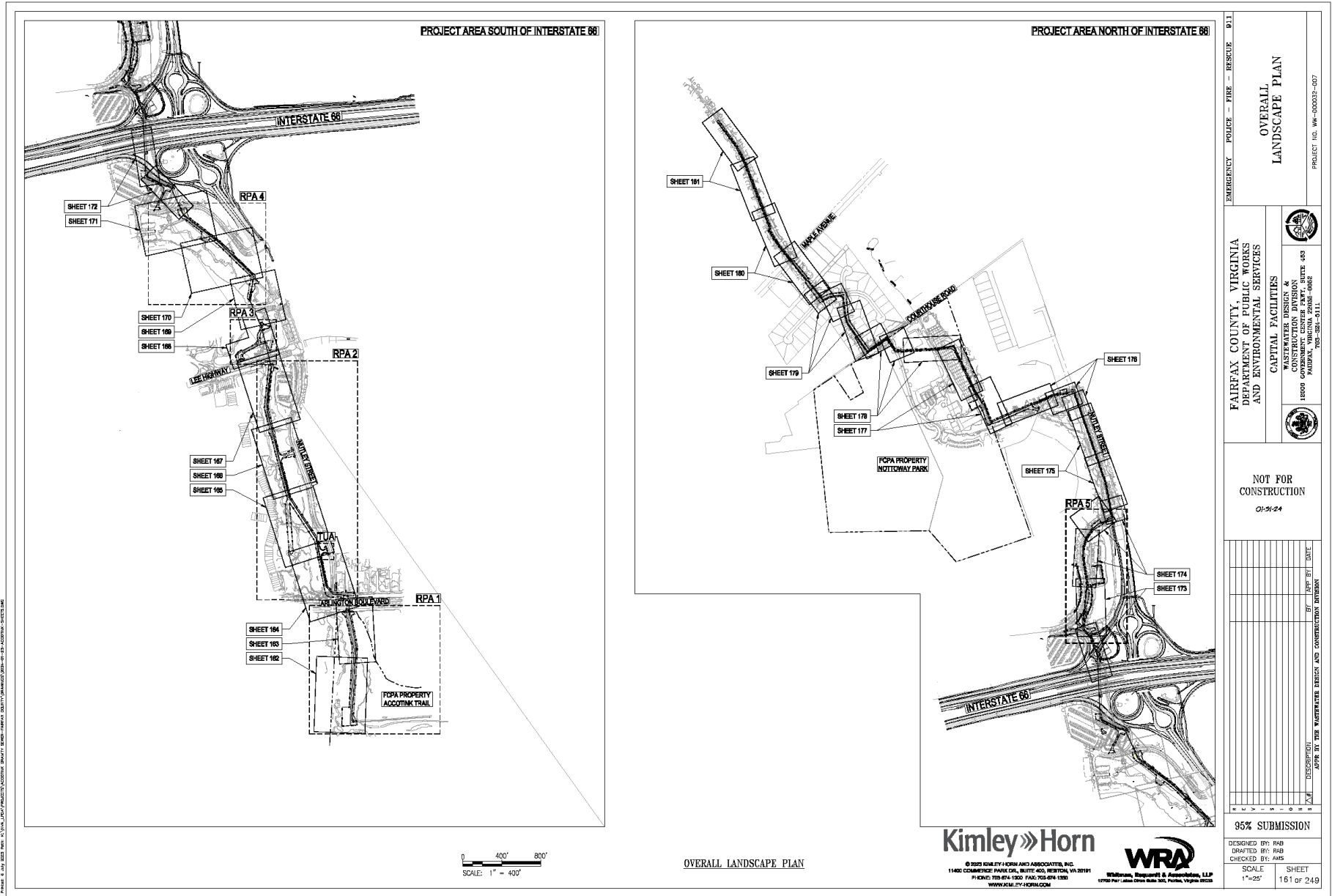








Page 14 of plan



DISBURSED RPA CALCULATIONS		PLANTING DENSITY PER ACRE CALCULATION FOR RPA RESTORATION					
RPA Disturbance - Land Area 1		RPA Disturbance - Land Area 2					
Area Deductions (SF)	81,492.51	Plant Type	Size	Density per Acre	Acres	Total Required	Total Provided
Rowways (Includes Clear Zone)	1,834.40	Overstory Trees	1.5' cal.	109	0.081	23	23
Sidewalks, Trail/Access Roads (Includes Clear Zone)	18,255.75	Understory Trees	.75' cal. (8 feet)	218	0.2555	13	13
Streets, Wetlands, Vernal Pools	3,484.83	Shrubs	12'-24" in 2 gal.	654	0.0319	10	10
22' Sanctuary Street Easement	30,595.27	Totals			0.2775	46	46
Existing Easements	15,261.01						
<b>Total Area to be Restored (SF) - Land Area 1</b>	<b>127,097.26</b>						
RPA Disturbance - Land Area 2		RPA Disturbance - Land Area 3					
Area Deductions (SF)	146,983.71	Plant Type	Size	Density per Acre	Acres	Total Required	Total Provided
Rowways (Includes Clear Zone)	9,324.52	Overstory Trees	1.5' cal.	109	0.052	14	24
Sidewalks, Trail/Access Roads (Includes Clear Zone)	5,887.17	Understory Trees	.75' cal. (8 feet)	218	0.0757	13	13
Streets, Wetlands, Vernal Pools	13,632.21	Shrubs	12'-24" in 2 gal.	654	0.1144	30	10
22' Sanctuary Street Easement	54,024.26	Totals			0.2676	47	47
Existing Easements	15,261.01						
<b>Total Area to be Restored (SF) - Land Area 2</b>	<b>127,537.39</b>						
RPA Disturbance - Land Area 3		RPA Disturbance - Land Area 4					
Area Deductions (SF)	27,460.95	Plant Type	Size	Density per Acre	Acres	Total Required	Total Provided
Rowways (Includes Clear Zone)	583.75	Overstory Trees	1.5' cal.	109	0.0386	10	10
Sidewalks, Trail/Access Roads (Includes Clear Zone)	15,329.46	Understory Trees	.75' cal. (8 feet)	218	0.0223	5	5
Streets, Wetlands, Vernal Pools	1,117.66	Shrubs	12'-24" in 2 gal.	654	0.0041	1	4
22' Sanctuary Street Easement	1,155.19	Totals			0.1114	19	19
Existing Easements	4,884.30						
<b>Total Area to be Restored (SF) - Land Area 3</b>	<b>4,852.94</b>						
RPA Disturbance - Land Area 4		RPA Disturbance - Land Area 5					
Area Deductions (SF)	59,381.00	Plant Type	Size	Density per Acre	Acres	Total Required	Total Provided
Rowways (Includes Clear Zone)	1,229.33	Overstory Trees	1.5' cal.	109	0.0941	11	11
Sidewalks, Trail/Access Roads (Includes Clear Zone)	19,524.65	Understory Trees	.75' cal. (8 feet)	218	0.2951	6	6
Streets, Wetlands, Vernal Pools	1,499.26	Shrubs	12'-24" in 2 gal.	654	0.0063	5	5
22' Sanctuary Street Easement	20,261.37	Totals			0.4355	22	22
Existing Easements	15,736.60						
<b>Total Area to be Restored (SF) - Land Area 4</b>	<b>54,467.12</b>						
RPA Disturbance - Land Area 5		RPA Disturbance - Land Area 6					
Area Deductions (SF)	49,246.92	Plant Type	Size	Density per Acre	Acres	Total Required	Total Provided
Rowways (Includes Clear Zone)	28,830.47	Overstory Trees	1.5' cal.	109	0.3229	3	3
Sidewalks, Trail/Access Roads (Includes Clear Zone)	5,777.85	Understory Trees	.75' cal. (8 feet)	218	0.0061	2	2
Streets, Wetlands, Vernal Pools	1,155.19	Shrubs	12'-24" in 2 gal.	654	0.0003	1	1
22' Sanctuary Street Easement	2,366.36	Totals			0.3305	6	6
Existing Easements	9,556.75						
<b>Total Area to be Restored (SF) - Land Area 5</b>	<b>9,556.75</b>						

Notes: Acres for RPA Calculations are based on the following:

References: Fairfax County's Public Facilities Manual, Section 12 3000 Tree Removal, Table 12.138 Planting

TEMPORARY USE AREA						
Temporary Use Area - 433.17 SF						
Plant Type	Size	Density	Total Required	Total Provided	Notes	
Trees	1.5" cal.	25% of Disturbed Area remaining area	108.29 SF (25%) / 150 SF (30-yr Canopy Coverage)	1 Tree	1 Tree	5 Trees Provided
Shrub	18" H.					
Seedslings (Bara Root)			124.88 SF (70%) / 1,000 SF 10 Seedlings	4 Seedlings	4 Seedlings	Provided as nursery stock
Grass, and Perennial Seed		1 lb. per 1,000 SF	See E&S Control Plans for Seeding Information			

References: Fairfax County, VA

Note: Temporary Use Areas (TUA) include temporary construction easements outside of RPAS (IWA disturbance within RPAS) and existing and proposed easements.

FAIRFAX COUNTY PARK AUTHORITY TREE REPLACEMENT				
NOTIFYING PARTY				
Per ECDA	Calculation/Requirement	To Be Provided	RPAs*	Supplemental
For trees outside the existing canopy measurement, removed trees to be replaced on 1:2.5 ratio. Species to be replaced in Stabilize soil with native seed mix.	Quantity of trees to be removed: 36x 2 replacements = 52 trees to be provided.	50 Trees		5 Trees (52 To Be Displaced)
See ECSD Control Plans for Seeding Information				
ACCOMPLISH TREES	Calculation/Requirement	To Be Provided	RPAs*	Supplemental
For trees outside the existing canopy measurement, removed trees to be replaced on 1:2.5 ratio. Species to be replaced in Stabilize soil with native seed mix.	Quantity of trees to be removed: 85x 2 replacements = 100 trees to be provided.	100 Trees	30 Trees	126 Trees (100 To Be Displaced)
See ECSD Control Plans for Seeding Information				

PLANT SCHEDULE							
Watering Key	Code	Botanical name	Common name	Quantity	Stock Size	Stock Type	Notes
<b>CATEGORY IV DECIDUOUS TREES (OVERSTORY TREES)</b>							
	A	ARMA <i>Acer rubrum</i>	Red Maple	50	1 1/2" Caliper	B&B	
	ARMA	<i>Acer rubrum</i>	Red Maple	3	1 1/2" Caliper	B&B	Temporary Use
	IAH	<i>Frax americana</i>	American Beech	3	1 1/2" Caliper	B&B	
	LSL	<i>Liquidambar styraciflua</i>	Sweetgum	5	1 1/2" Caliper	B&B	
	LSL	<i>Liquidambar styraciflua</i>	Sweetgum	2	1 1/2" Caliper	B&B	Temporary Use
	LT	<i>Liquidambar tulipifera</i>	Tulip Poplar	13	1 1/2" Caliper	B&B	
	POS	<i>Platanus occidentalis</i>	Sycamore	11	1 1/2" Caliper	B&B	
	QPB	<i>Quercus prinus</i>	Pin Oak	13	1 1/2" Caliper	B&B	
Category IV Subtotal				100			
<b>CATEGORY III DECIDUOUS TREES (OVERSTORY TREES)</b>							
	ZNF	<i>Disyranthe virginiana</i>	Common Redstart	4	1 1/2" Caliper	B&B	
Category III Subtotal				4			
<b>CATEGORY II DECIDUOUS TREES (UNDERSTORY TREES)</b>							
	B	CIF <i>Cornus Florida</i>	Flowering Dogwood	21	0.75" Caliper	DB&B	
	B	OVE <i>Ostrya virginiana</i>	Eastern Hophornbeam	18	0.75" Caliper	B&B	
				39			
<b>SHRUBS</b>							
	D	CAS <i>Cornus amomum</i>	Silly Dogwood	9	12" x 24" Height	1 gal. min.	
	D	VEB <i>Veronica</i>	Veronica	1	12" x 24" Height	1 gal. min.	
	D	LBS <i>Linum benzen</i>	Spicebush	8	12" x 24" Height	1 gal. min.	
Shrubs Subtotal				30			
TOTAL SUBTOTALS				174			

## LANDSCAPE CALCULATIONS & PLANTING SCHEDULE

# Kimley»Horn

© 2020 KIMLEY-HORN AND ASSOCIATES, INC.  
11400 COMMERCE PARK DR., SUITE 400, RESTON, VA 20191  
PHONE: 703-874-1300 FAX 703-874-1300  
WWW.KIMLEY-HORN.COM

**WRA**  
Hilman, Rogardt & Associates  
100 Lakes Circle Suite 300, Fairfax, VA

Whitman, Hoagland & Associates, L.L.C.  
12750 Fair Lakes Circle Suite 200, Fairfax, VA 22033

**Whitman, Hoagland & Associates, L.L.C.**  
12700 Fair Lakes Circle Suite 200, Fairfax, Virginia 22033

EMERGENCY	POLICE - FIRE - RESCUE	911
-----------	------------------------	-----

## LANDSCAPE CALCULATIONS & PLANTING SCHEDULE

FAIRFAX COUNTY, VIRGINIA  
DEPARTMENT OF PUBLIC WORKS  
AND ENVIRONMENTAL SERVICES



CAPITAL FACILITIES

**WASTEWATER DESIGN &  
CONSTRUCTION DIVISION**  
GOVERNMENT CENTER PKWY, SUITE  
2200, ALEXANDRIA, VIRGINIA 22304-0052

CENT CENTER PM  
 VIRGINIA 2203  
 203-324-5111

NOT FOR  
CONSTRUCTION

아-가-2-

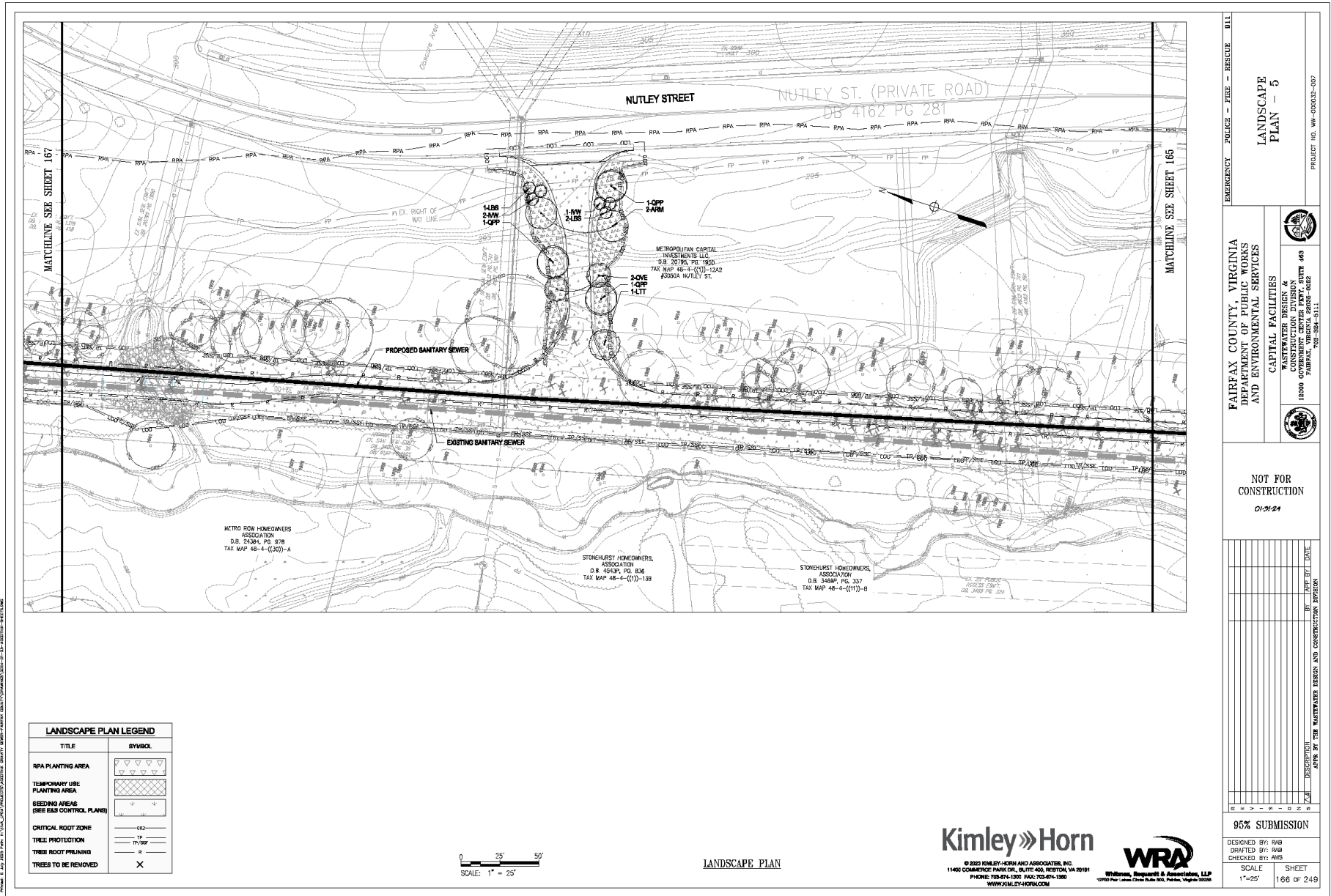
[illegible]

95% SUBMISSION

DESIGNED BY: RAB  
DRAFTED BY: RAB  
CHECKED BY: AMS

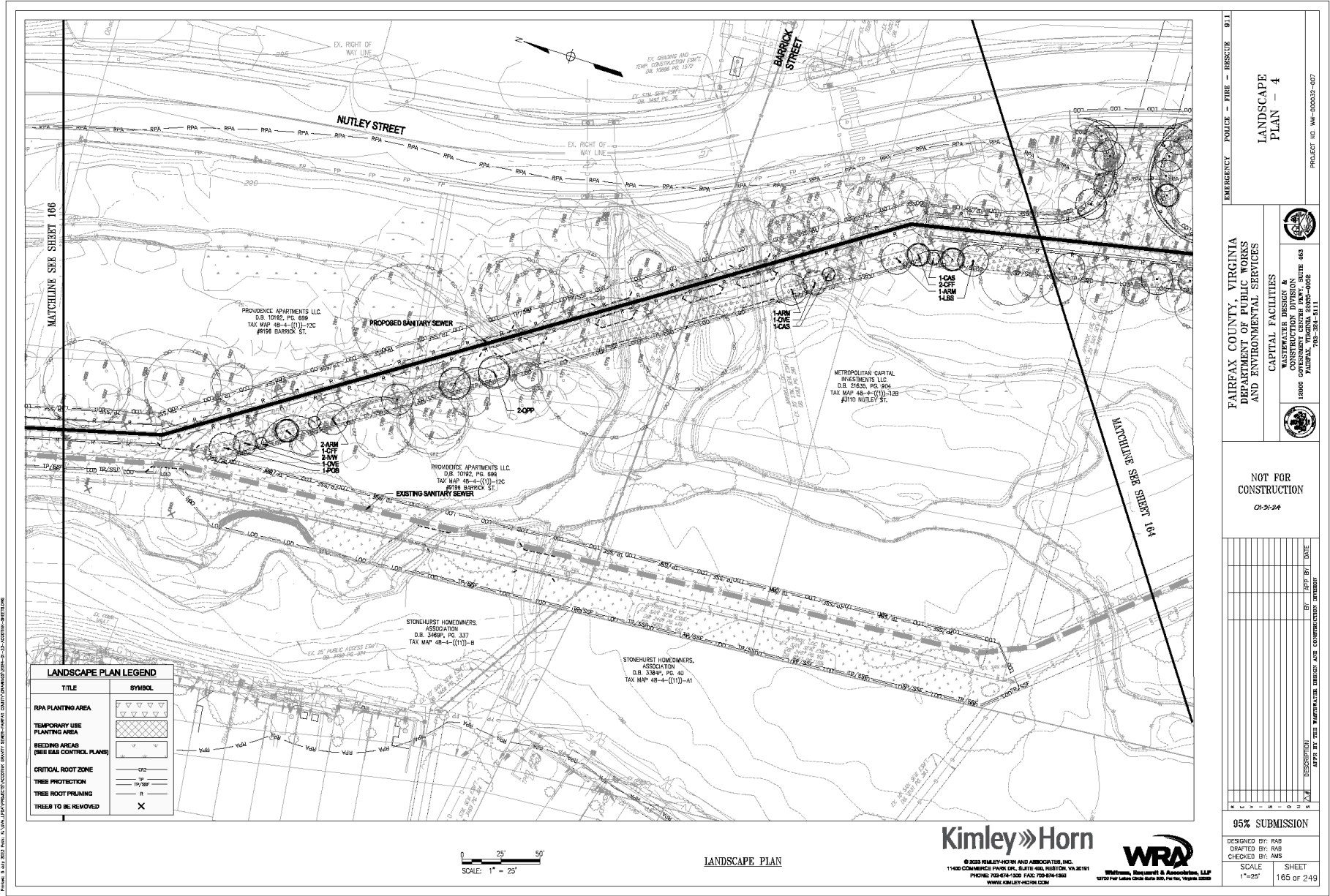
SCALE NTS	SHEET 158 OF 2
--------------	-------------------



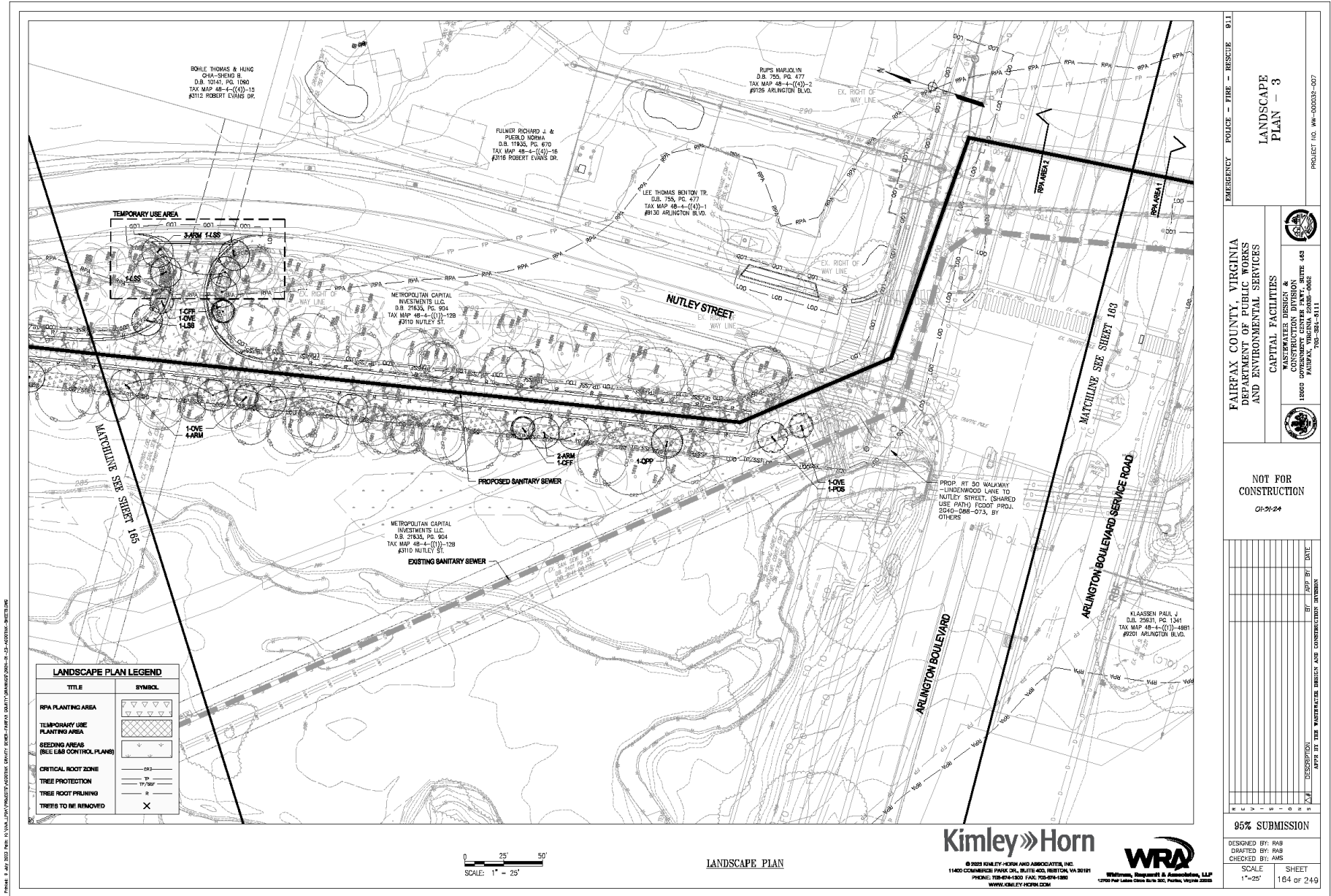


Page 166 of plan





Page 165 of plan



Page 164 of plan